

VOICEFLIGHT ACTIVATION SWITCH (VAS)

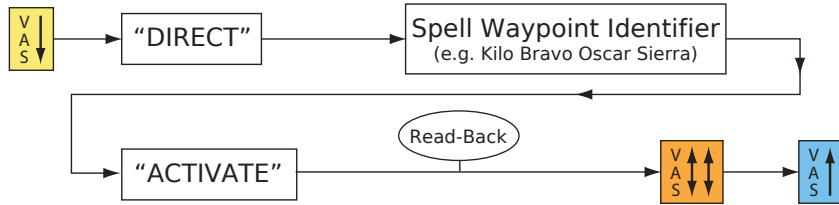
- ▶ VFS101 accepts input only when VAS is depressed
- ▶ VAS depression generates double beep (system ready)
- ▶ Releasing VAS discards partial entries and extraneous noise (Useful for mistakes or accidental speech/noise)
- ▶ VAS release also cancels edit selection and pending airways
- ▶ All VFS101 audio feedback is inhibited after VAS release



ALPHABETIC IDENTIFIER ENTRY

- ▶ Uses standard ICAO spelling alphabet (Alpha, Bravo, Charlie, etc.)
- ▶ Only standard words are recognized (avoid: Adam, Fox, Ohhh, etc.)
- ▶ Include any airport prefix characters (e.g. KBOS for Boston)
- ▶ Numbers are entered as a string of digits (Victor Fife Zero Niner)
- ▶ Only waypoints within 250 nautical miles are recognized

DIRECT-TO WAYPOINT ENTRY

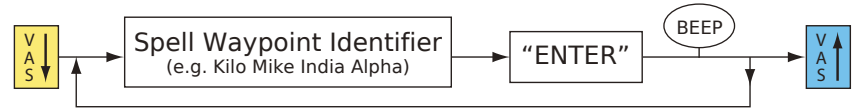


- ▶ Audio readback of recognized direct-to waypoint is provided
- ▶ If correct, waypoint is confirmed by double-clicking VAS (entry is discarded after 2-3 seconds without double-click)
- **CAUTION:** Waypoint and indicated track must be verified on NAV page

FLIGHTPLAN OPERATIONS

- ▶ VFS101 operates only on active flightplan of primary GPS
- ▶ Title line of active flightplan provides best feedback
- ▶ VFS101 will not operate if an approach is loaded
- ▶ VFS101 operates only on en-route section of flightplan
- ▶ Modification of active flightplan leg is not supported

ENTERING WAYPOINTS



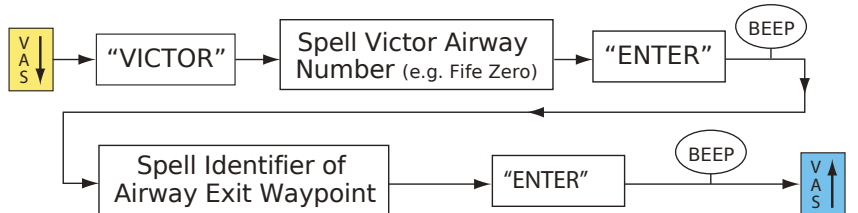
- ▶ Waypoints are added to end of en-route section

ERROR CORRECTION



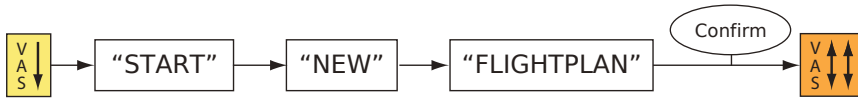
- ▶ Removes last waypoint from enroute section
- ▶ Easily corrects misrecognized or unintended entries

VICTOR AIRWAYS



- ▶ Previous waypoint in flightplan must be on stated airway
- ▶ VAS must remain depressed between airway name and exit waypoint
- **CAUTION:** Waypoints generated for an airway must be carefully verified. Pay special attention to omitted waypoints if airway compression is enabled.

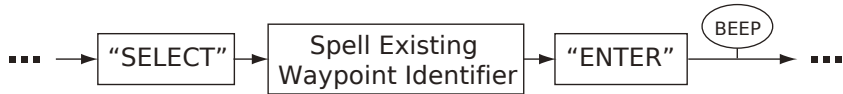
STARTING NEW FLIGHTPLAN



- ▶ Erases entire contents of active flightplan

ADVANCED EDITING

- ▶ Insertions and deletions normally occur at end of en-route section
- ▶ To edit elsewhere, an editing position must be SELECTED

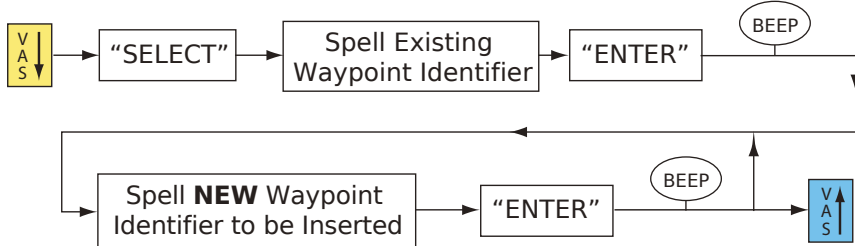


- ▶ Selects a position in flightplan for subsequent edits
- ▶ Selected waypoint is surrounded by asterisks on title line:

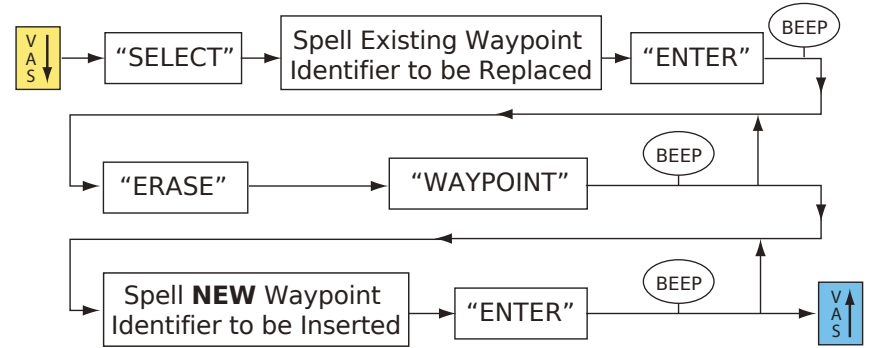
HFD -> *BOS* -> KMHT

- **CAUTION:** Blinking cursor in flightplan does NOT reflect VFS101 selection
- ▶ New waypoints are inserted above selected waypoint
- ▶ "ERASE WAYPOINT" removes selected waypoint
- ▶ Selection is canceled when VAS is released
- ▶ Waypoints within departure and arrival procedures can not be selected

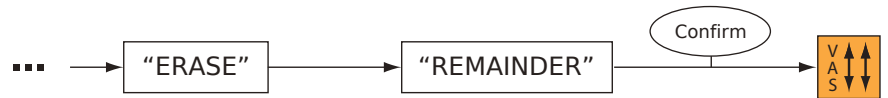
INSERTING WAYPOINTS INTO FLIGHTPLAN



REPLACING FLIGHTPLAN WAYPOINTS



ROUTING CHANGE



- ▶ Only valid while selection is active
- ▶ Erases all waypoints in flightplan after selected waypoint

SPELLING ALPHABET

Alpha	Juliet	Sierra	Two
Bravo	Kilo	Tango	Three
Charlie	Lima	Uniform	Four
Delta	Mike	Victor	Fife
Echo	November	Whiskey	Six
FoxTrot	Oscar	X-Ray	Seven
Golf	Papa	Yankee	Eight
Hotel	Quebec	Zulu	Niner
India	Romeo	One	Zero